

Иерр. примен.

Спраб. №

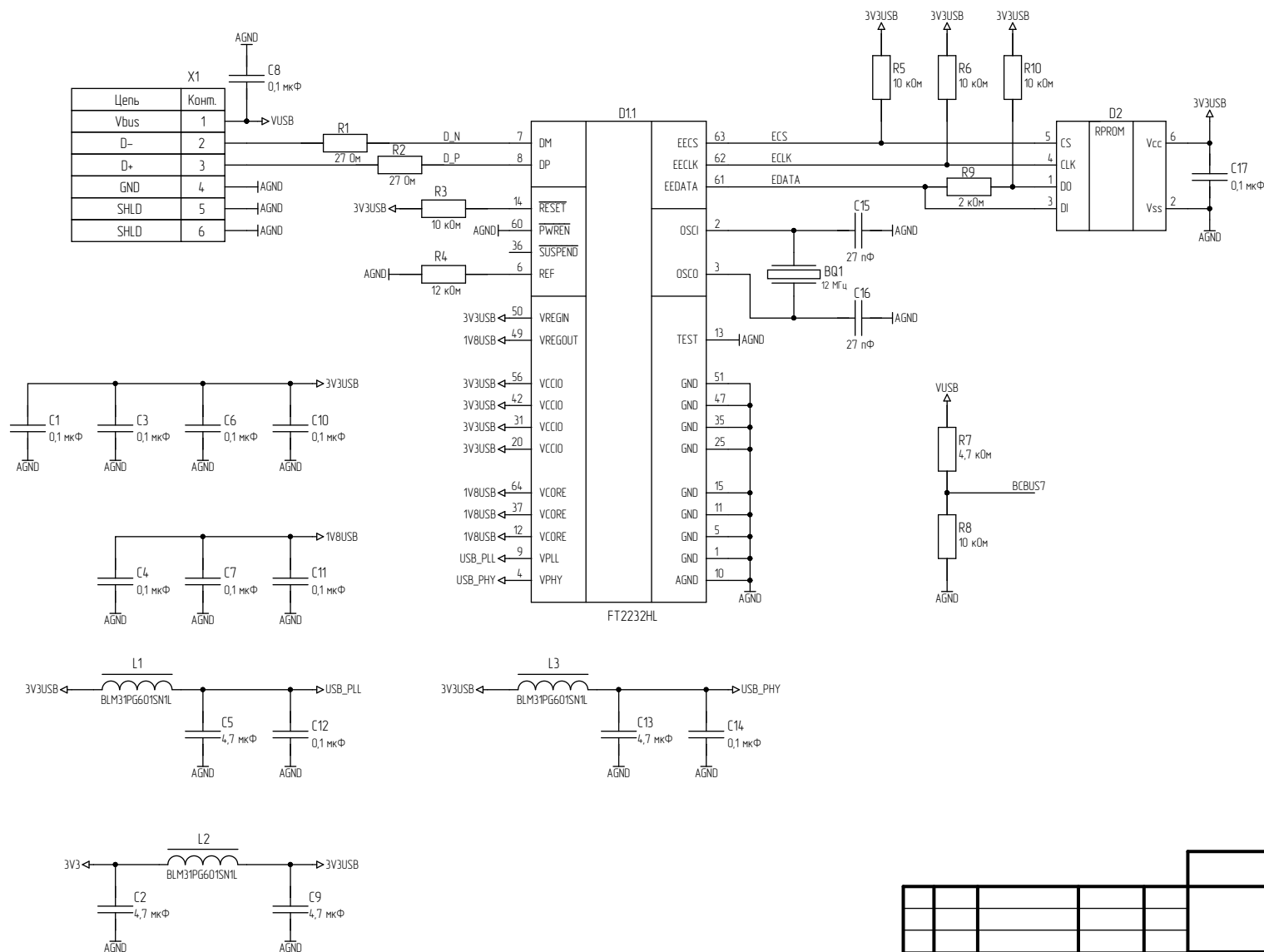
Подпн. и дата

Взам. инб. №

Подпн. и дата

Инб. № подл.

*



D12

ADBUS0	16	ADBUS0
ADBUS1	17	ADBUS1
ADBUS2	18	ADBUS2
ADBUS3	19	ADBUS3
ADBUS4	21	ADBUS4
ADBUS5	22	ADBUS5
ADBUS6	23	ADBUS6
ADBUS7	24	ADBUS7
ACBUS0	26	ACBUS0
ACBUS1	27	ACBUS1
ACBUS2	28	ACBUS2
ACBUS3	29	ACBUS3
ACBUS4	30	ACBUS4
ACBUS5	32	ACBUS5
ACBUS6	33	ACBUS6
ACBUS7	34	ACBUS7

FT2232HL

D13

BOBUS0	38	BOBUS0
BOBUS1	39	BOBUS1
BOBUS2	40	BOBUS2
BOBUS3	41	BOBUS3
BOBUS4	43	BOBUS4
BOBUS5	44	BOBUS5
BOBUS6	45	BOBUS6
BOBUS7	46	BOBUS7
BCBUS0	48	BCBUS0
BCBUS1	52	BCBUS1
BCBUS2	53	BCBUS2
BCBUS3	54	BCBUS3
BCBUS4	55	BCBUS4
BCBUS5	57	BCBUS5
BCBUS6	58	BCBUS6
BCBUS7	59	BCBUS7

FT2232HL

*

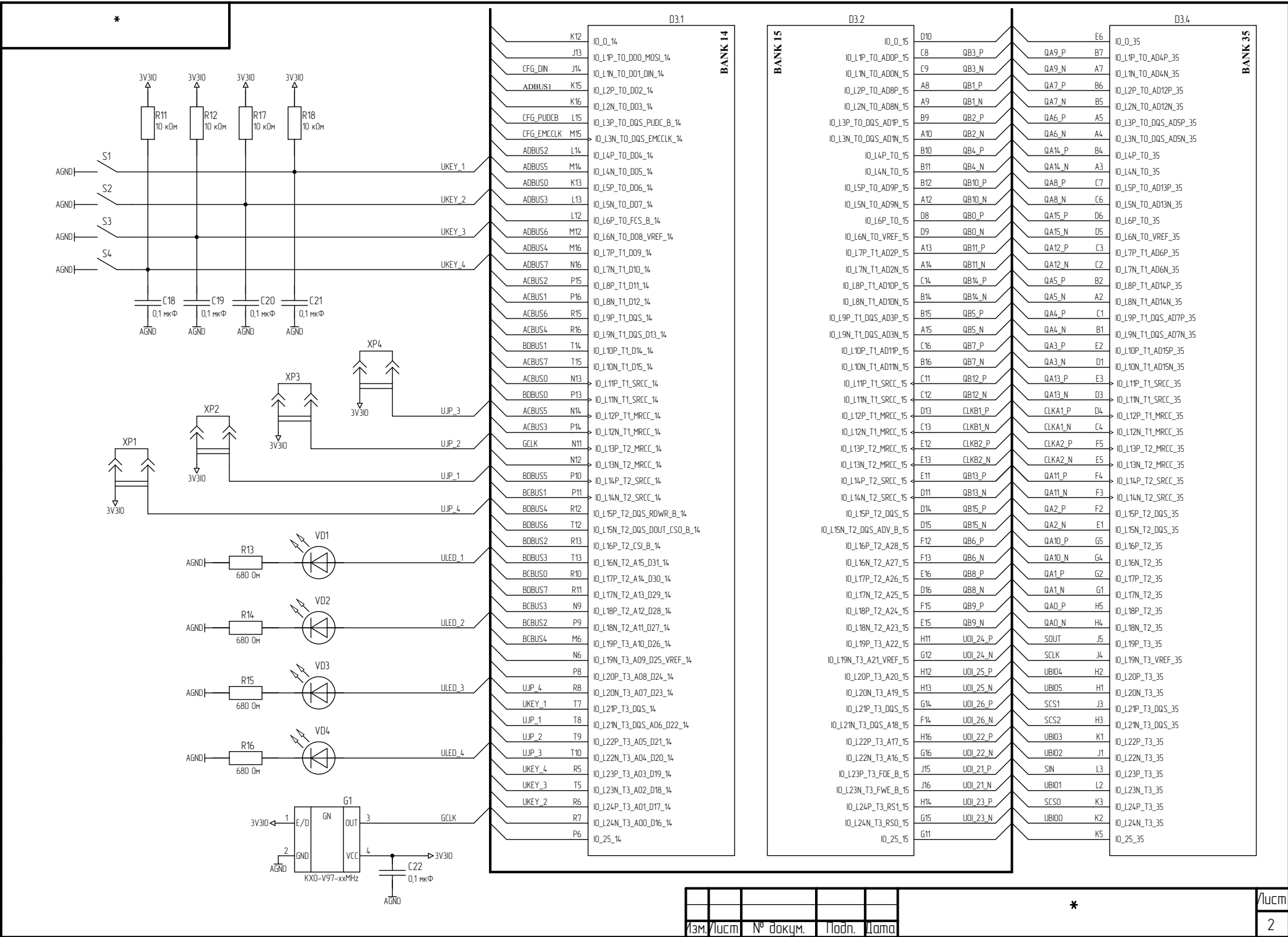
Плата
сбора данных

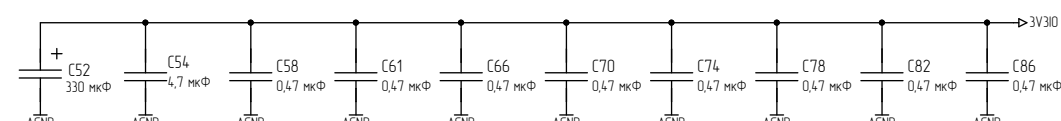
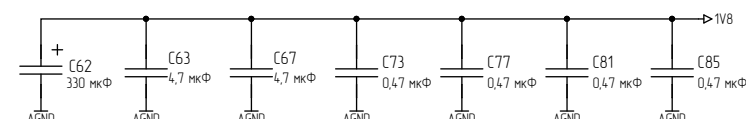
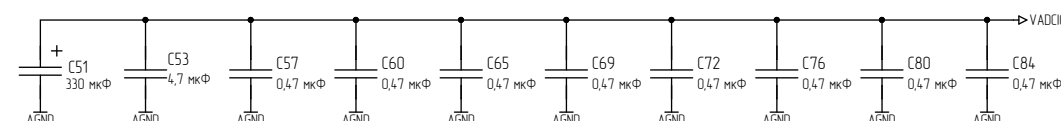
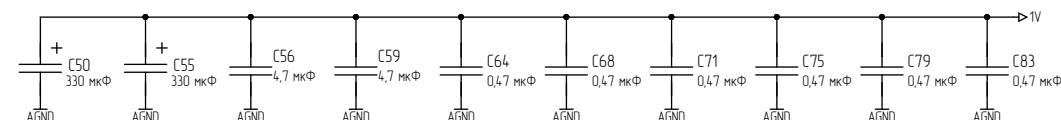
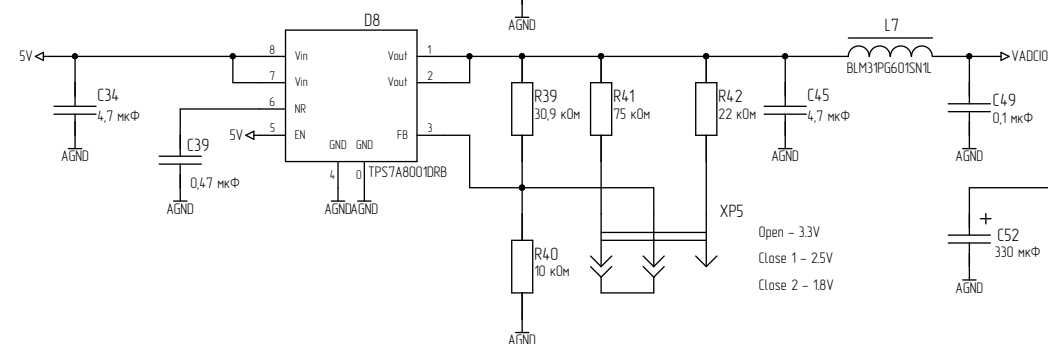
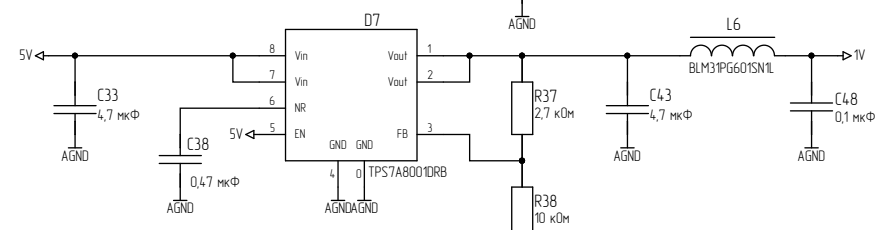
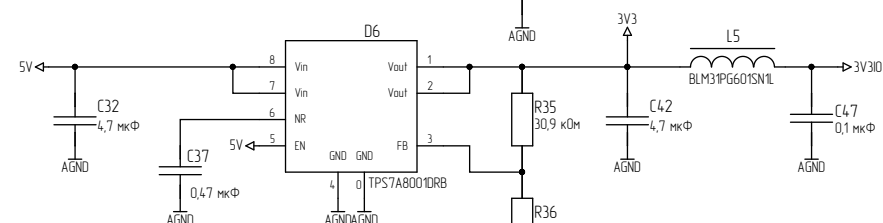
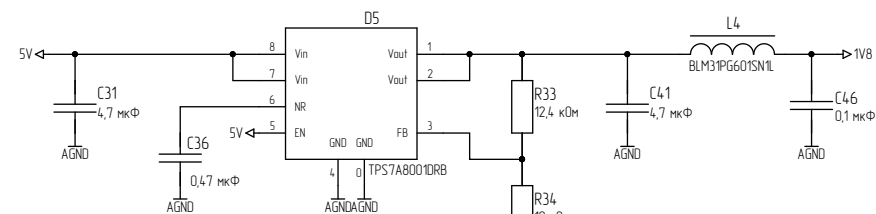
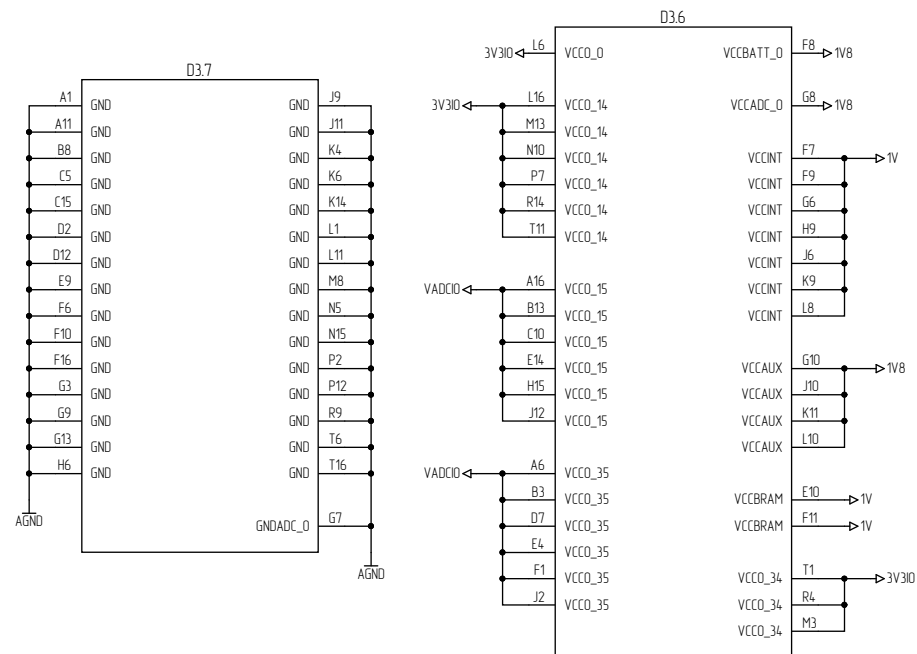
Лист. Масса Масштаб

Лист 1 Листов 5

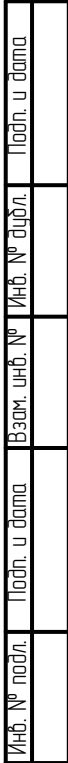
ЗАО "ПКК Миландр"

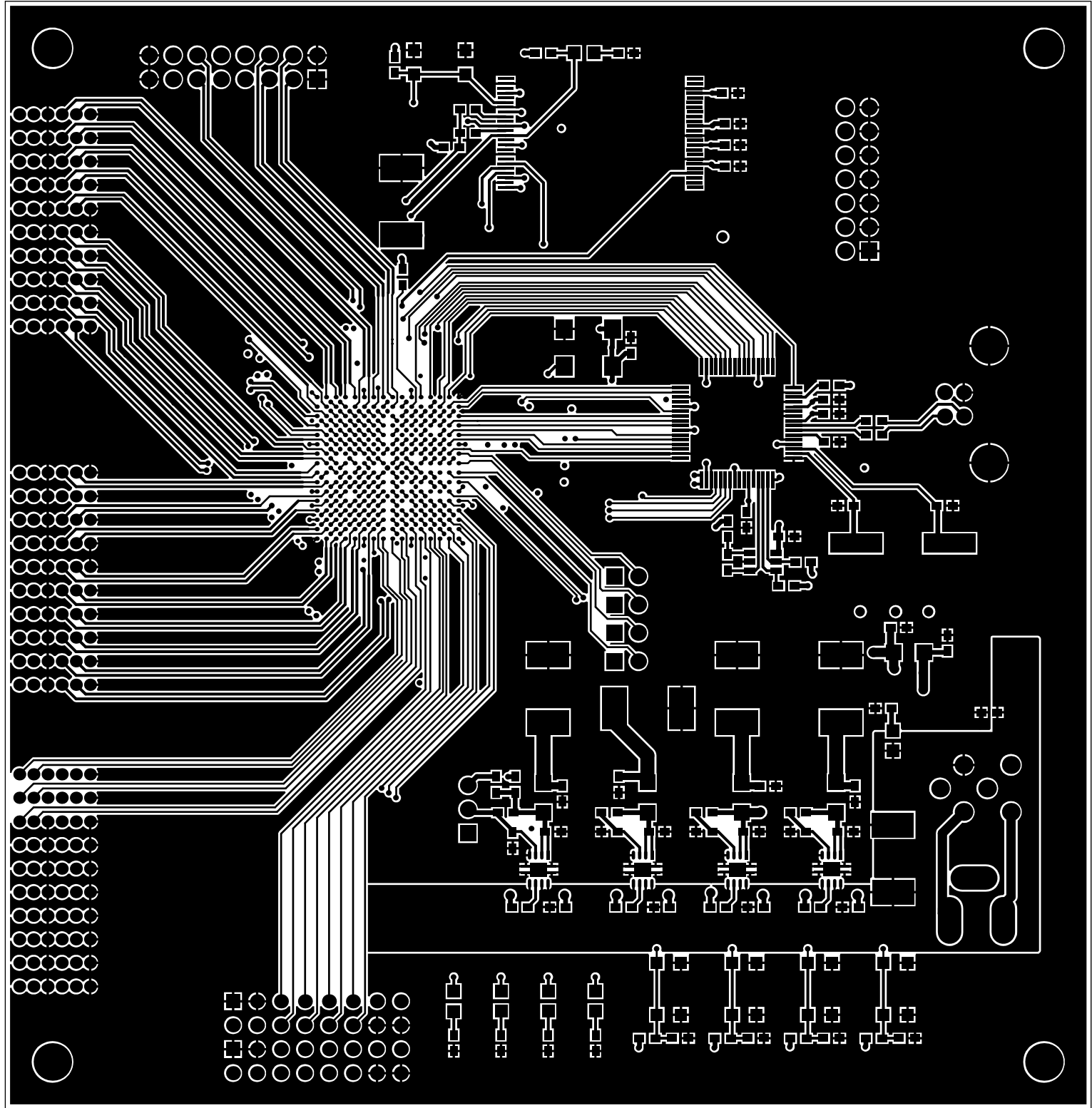
Изм.	Лист	№ докум.	Подпн.	Дата
Разраб.				
Проб.				
Т.контр.				
Н.контр.				
Утв.				

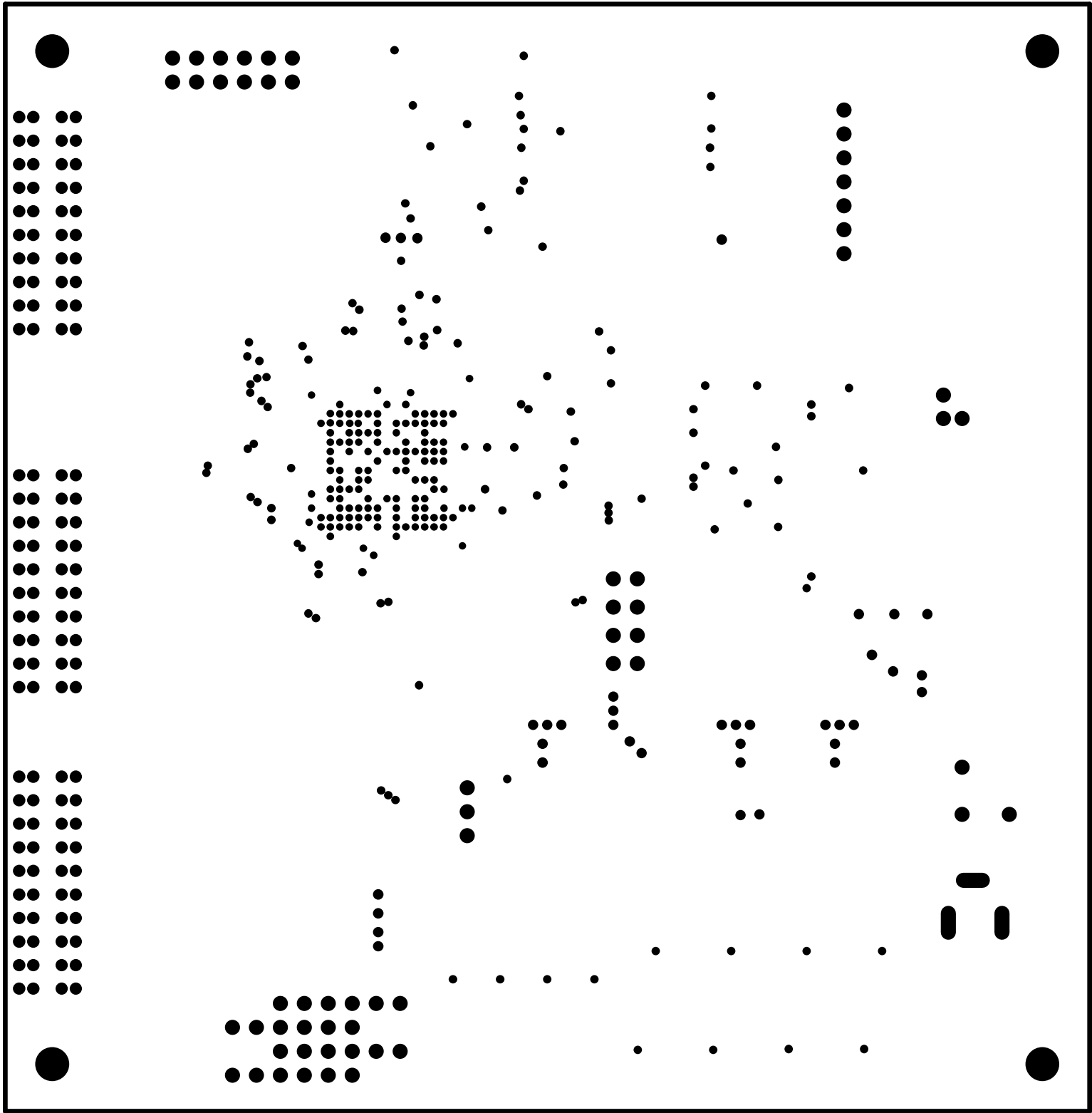


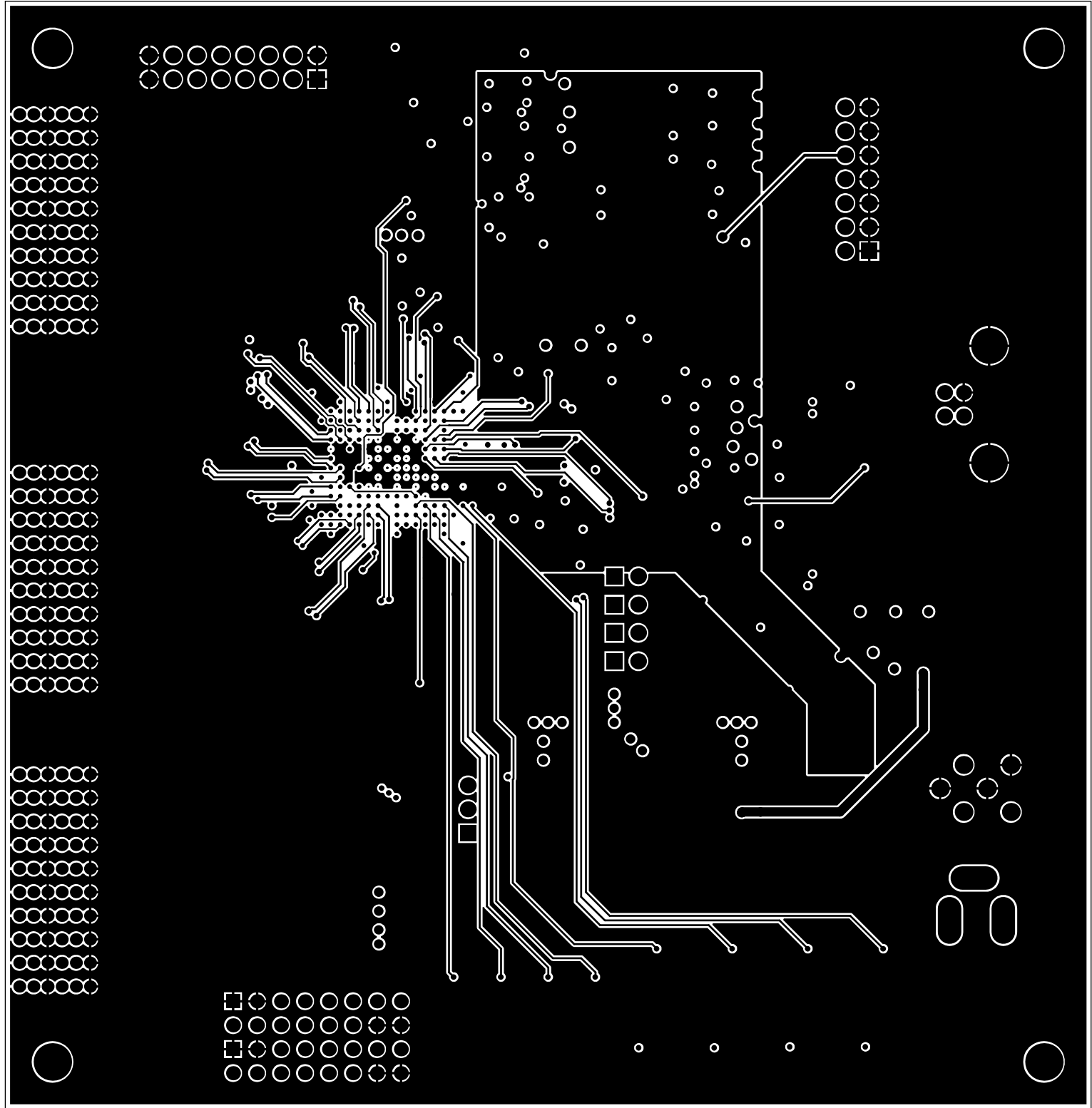


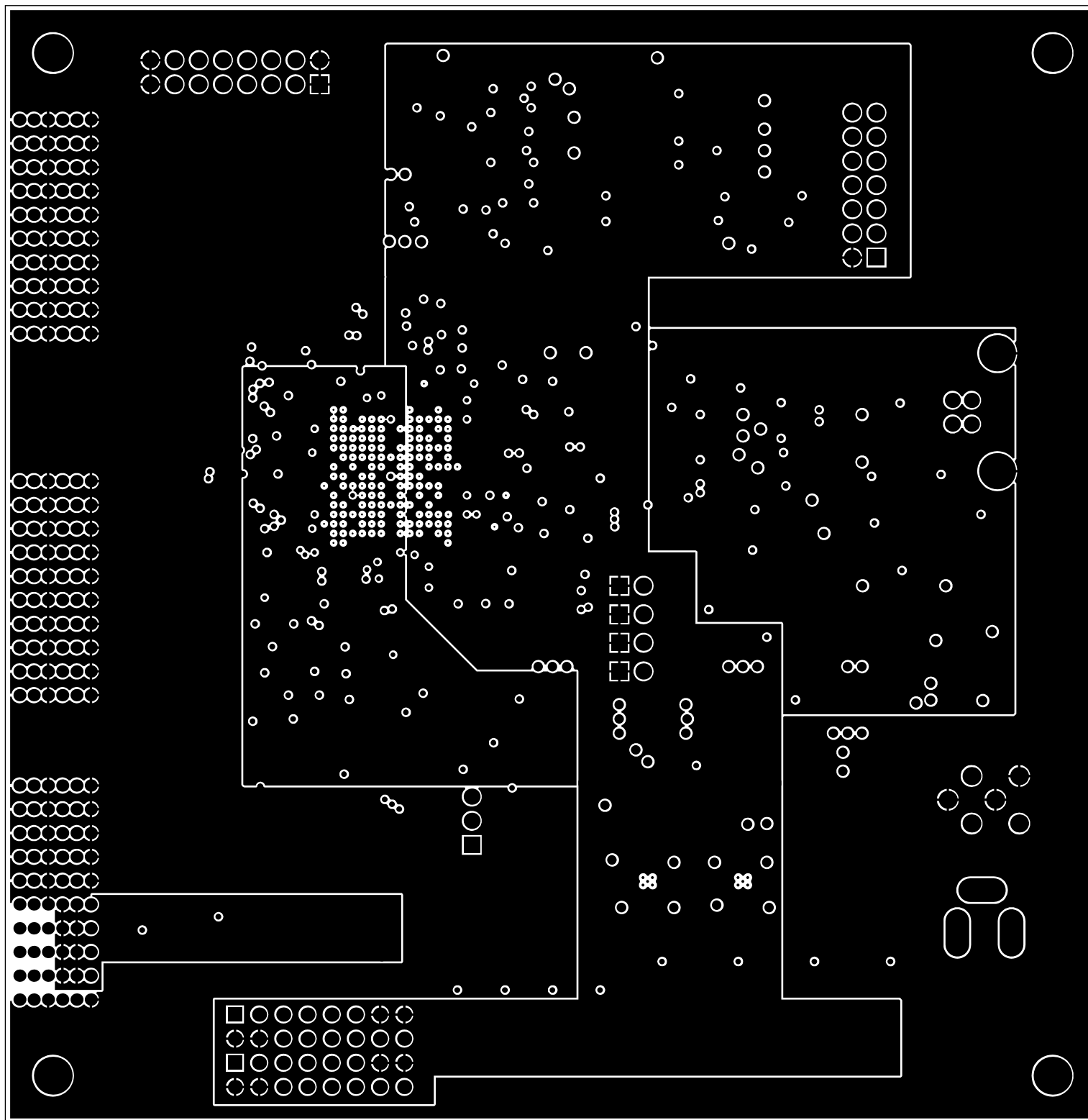
*

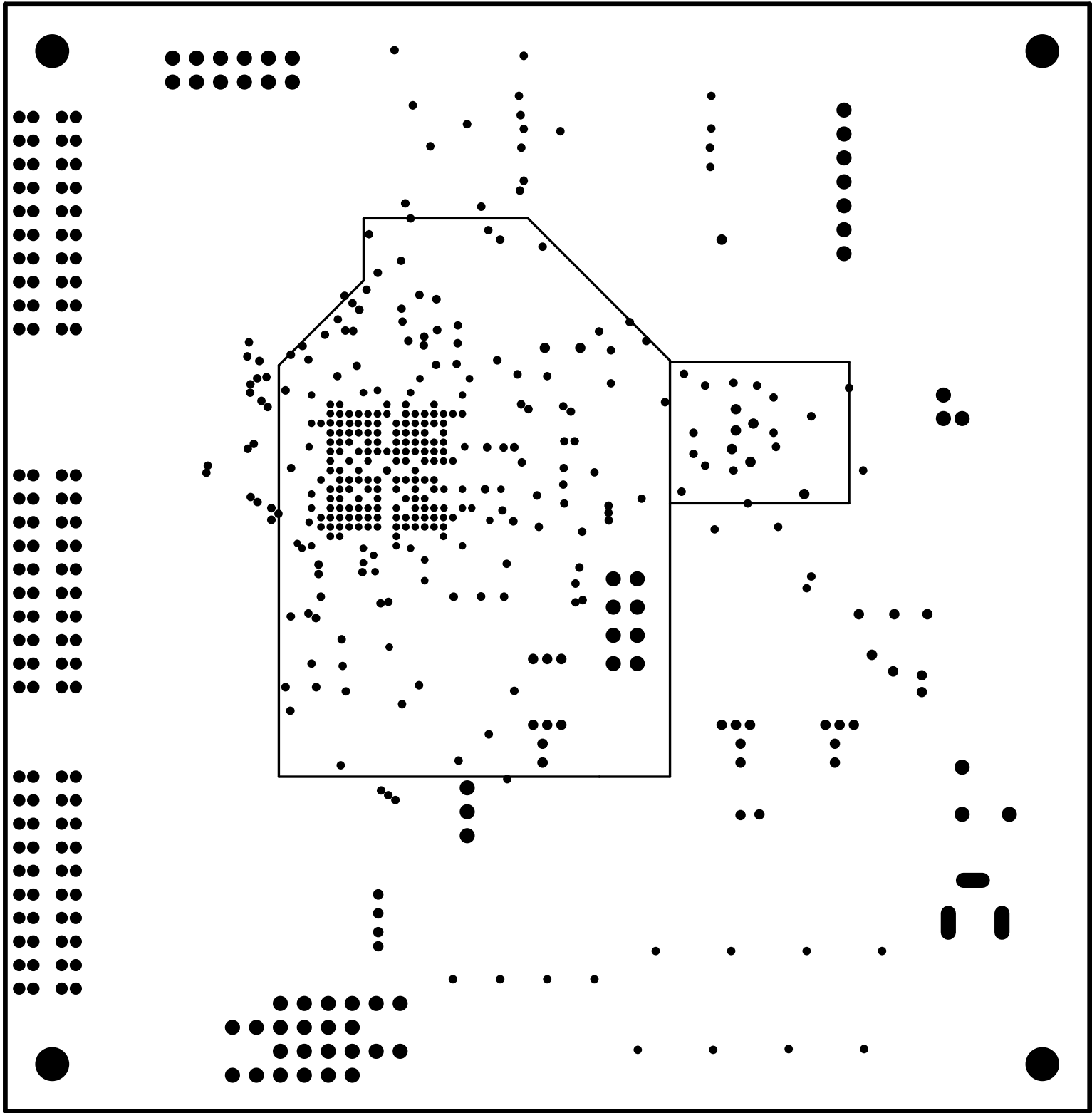


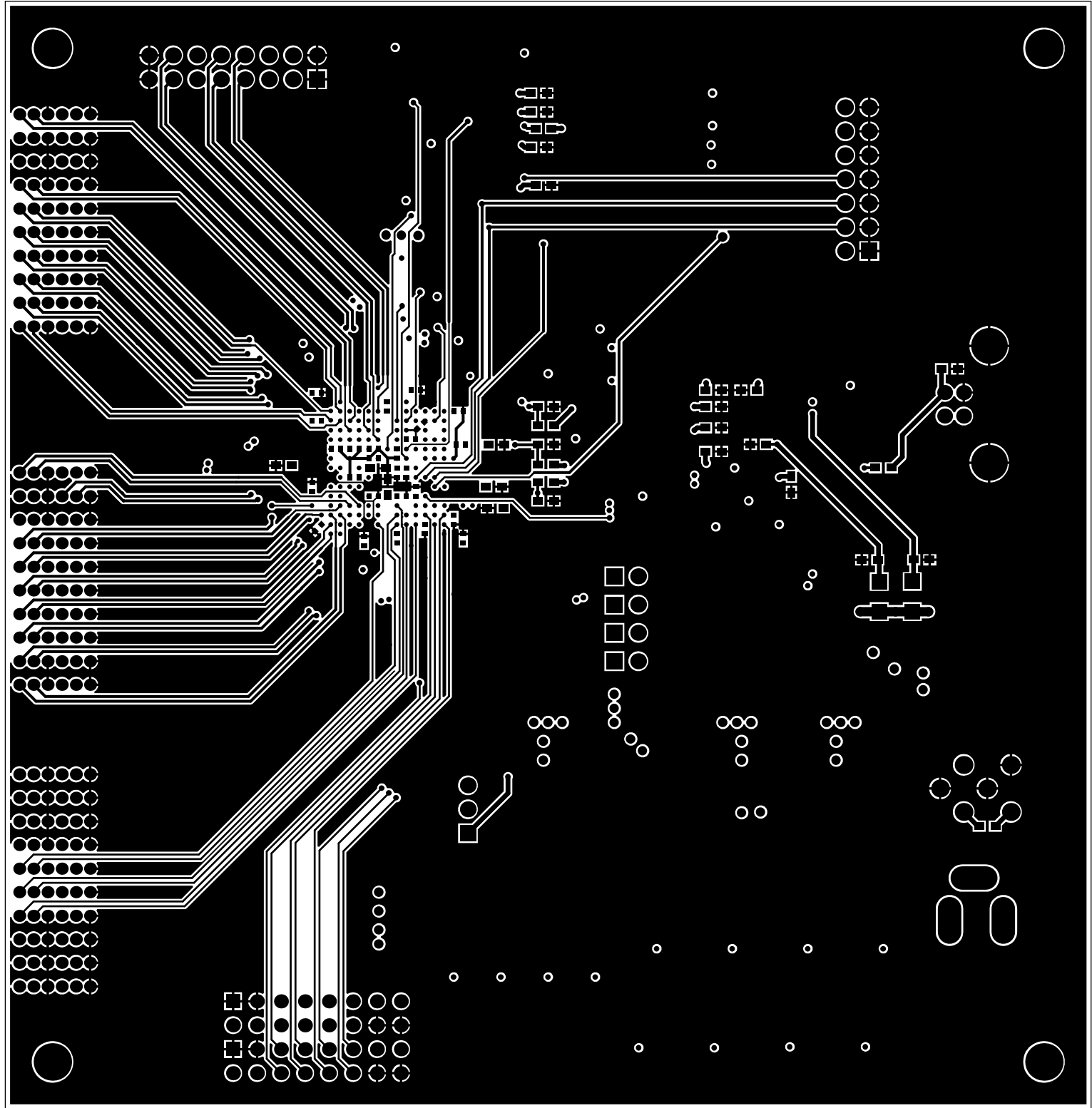


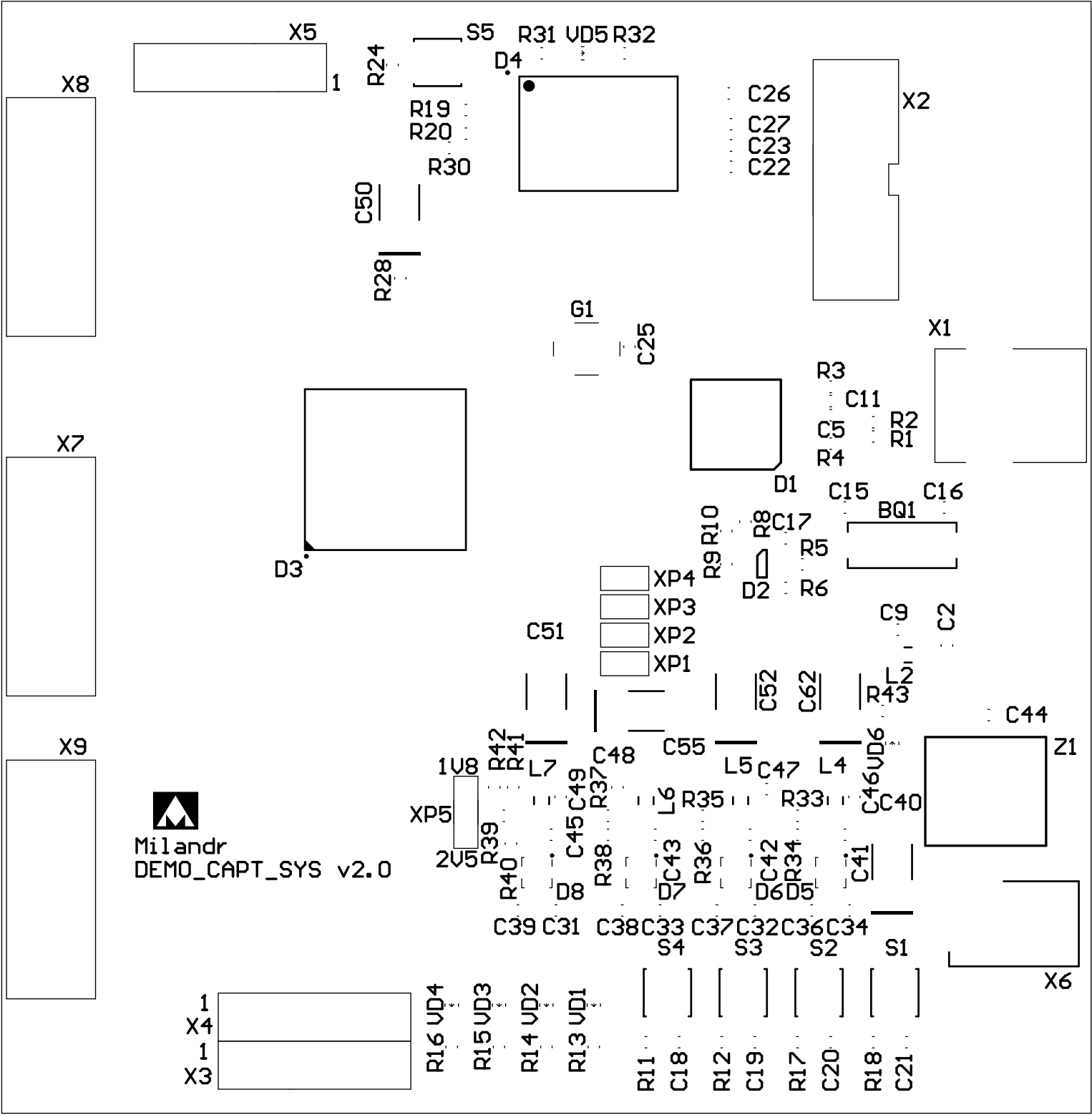












C32

C8
R7
C15 C14
C13 C12

C9 C10
C1 C3
C4

C30
C29
C28
C27

C24

C21
C20
C19
C18
C17
C16
C15

C13
C12
C11

C10
C9
C8
C7
C6
C5
C4
C3
C2
C1

C23

Поз. обозн.	Номинал	Корпус	Кол-во
BQ1	HC49SM	SMU-4	1
C1, C3, C4, C6, C7, C8, C10, C11, C12, C14, C17, C22, C23, C24, C25, C26, C27, C28, C29, C30, C35, C44, C46, C47, C48, C49	0,1 мкФ	0603	26
C2, C5, C9, C13, C31, C32, C33, C34, C41, C42, C43, C45, C53, C54, C56, C59, C63, C67	4,7 мкФ	0603	18
C15, C16	27 пФ	0603	2
C36, C37, C38, C39	0,47 мкФ	0603	4
C40, C50, C51, C52, C55, C62	330 мкФ	TANT_CaseD	6
C57, C58, C60, C61, C64, C65, C66, C68, C69, C70, C71, C72, C73, C74, C75, C76, C77, C78, C79, C80, C81, C82, C83, C84, C85, C86	0,47 мкФ	0402	26
D1	FT2232HL	LQFP-64	1
D2	93LC56BT-I/OT	SOT23-6	1
D3	XC7A100T-2FTG256C	FTG256	1
D4	XCF32PVOG48C	VOG48	1
D5, D6, D7, D8	TPS7A8001DRB	SON-8	4
G1	KXO-V97-xxMHz	SMD_7x5.08mm	1
L1, L2, L3, L4, L5, L6, L7	BLM31PG601SN1L	1206	7
R1, R2	27 Ом	0603	2
R3, R5, R6, R8, R10, R34, R36, R38, R40	10 кОм	0603	9
R4	12 кОм	0603	1
R7, R24, R28, R29	4,7 кОм	0603	4
R9	2 кОм	0603	1
R13, R14, R15, R16	680 Ом	0603	4
R20	0	0603	1
R21, R22, R23, R43	1 кОм	0603	4

R30	NC	0603	1
R31, R32	330 Ом	0603	2
R33	12,4 кОм	0603	1
R35, R39	30,9 кОм	0603	2
R37	2,7 кОм	0603	1
R41	75 кОм	0603	1
R42	22 кОм	0603	1
S5	7914G-1-000	7914G-1-000	1
VD1, VD2, VD3, VD4, VD5, VD6	LED_0805	0805(2x1.25)	6
X1	USB_TYPE_B	USB_B	1
X2	IDC-14MS	IDC-14MS	1
X6	DJK-02A	DJK-02A	1
X7, X8, X9	TYCO 6469028-1	Tyco 6469028-1	3
XP1	1x2_jump	2pin254	1
XP5	1x3_jump	3pin254	1
Z1	BNX002-01	BNX002-01	1